




SAHAMID & CO.

Electrical Controls and Engineering Solutions



**World - Class Solutions
for Industries**





IN THE NAME OF ALLAH, THE SOFT HEARTED, THE MERCIFUL
BY THE TIME! MAN IS SURELY IN LOSS, EXCEPT THOSE WHO
BELIEVED AND DID GOOD WORKS, AND EXHORTED ONE
ANOTHER TO TRUTH, AND EXHORTED ONE ANOTHER TO
PATIENCE.

Qur'an. 103 (Surah Al-Asr)



SAHAMID & CO.

Electrical Controls and Engineering Solutions



Our Services...

a Par Excellence

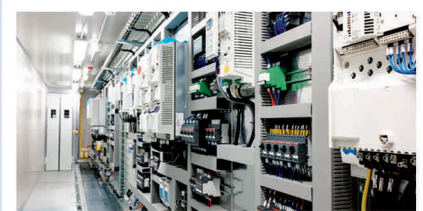


SAHAMID&CO.

Electrical Controls and Engineering Solutions

Company Introduction

S.A. Hamid & Co. is part of the Hamid Group which provides one stop shopping to customers for electrical switchgear and automation products. For over fifty years, S.A. Hamid & Co. has been known for providing its customers with high quality products and outstanding services. The blessings of ALLAH have allowed this family owned business to grow into a recognized and respected company for the sales, services and stocks of Industrial Switchgear and Automation devices.



S.A. Hamid & Co. was established by Sheikh Abdul Hamid in 1964 in the month of April as a contracting company providing solutions based on electric motors, turbines and pumps. In the early 1970s his sons Mr. Iftikhar Hussain (BSc. & LLB.) and Mr. Nasir Hussain (BSc. Engg.) joined him in the business. In the early 1980s S.A. Hamid & Co. added electrical switchgear to its product range. By the late 1980s the company's main focus was related to electrical power components. In the early 1990s the company added automation components to its product line.

In 2002 the company became a distributor for **EATON** (Formerly known as Moeller) & **PULS** in Pakistan. With time and persistence S.A. Hamid & Co. was also awarded distribution rights from **BREMAS** in 2005, **PEPPERL+FUCHS** in 2006, **HENSEL & WALTHER** in 2007.

The year 2008 was especially momentous with the joining of Mr. Arif Iftikhar (BCS. & MS. Software Engg.) And Mr. Jamal Nasir (BSc. Engg. & MBA) and it also marked the year when S.A. Hamid & Co. was appointed distributor for **CONDOR & AGRO**. In 2010, by the grace of ALLAH Almighty, **SCHNEIDER ELECTRIC** selected S.A. Hamid & Co. as their distributor in Pakistan. In same year company was granted dealership of **SIEMENS**.

As year 2012 started, **CITEL & AUER SIGNALS** choose S.A. Hamid & Co as their distributor in Pakistan. In Year 2015 company was awarded distribution ship of European companies **EMITER & WAGO**. Finally in year 2018 & 2019 two more companies, **KATKO & FLEXA** select S.A. Hamid & Co. as their official distributor in Pakistan,

S.A. Hamid & Co. today, by the grace of ALLAH is providing high quality products for its customers. Its product line ranges from power components such as Circuit Breakers, Magnetic Contactors, Overload Relays, Power Factor Capacitors & Relays, Motor Isolators, Motor Control Centers, Junction Boxes, Enclosure Systems, Industrial Plugs Sockets and Flexible Conduits to cutting edge technological products such as PLCs, HMIs, Variable Frequency Drives, Soft Starters, Proximity Sensors, Photoelectric Sensors, Ultrasonic Sensors, Rotary Encoders, Safety Sensors, Safety Relays, Temperature Controllers & Recorders, Spring Loaded Terminal Blocks, Splicing Connectors, Slim Relays and Audio Visual Signaling Solutions.

With the help of our wide product range and our strong technical team we try to help our customers in making informed decisions and try to optimize their purchases to generate maximum value for their money.





OUR PHILOSOPHY



Vision

Our Vision is to please ALLAH by generating customer delight through our veracious & principled services and to generate real value for all stake holder of the company by doing so.



Mission

We strive to become to prime choice supplier for our customers in the field of electrical controls & automation devices by maintaining the best quality products & well trained human resource.



Values

S.A. Hamid & Co. has a set of core values that guide all our activities. Our core values are derived from teaching of ALLAH & his Holy Prophet (S.A.W). We encourage our team to ensure that all their internal & external activities are in sync with our core values which includes:

- Truthfulness
- Honesty
- Passion
- Innovation
- Excellence
- Transparency
- Respect
- Commitment
- Team Work



Machine Automation

S.A. Hamid & CO. provides solutions for Machine Automation. We are specialized in automation for all types of machinery related to Factory Automation Sector.

Our Services include solutions for paper & board industry, printing & packaging industry, textile industry, pharmaceutical industry, food & beverage industry and many more. We have a sound experience in automation solutions for RO Water Plant, Blow Molding Machines Cutting Machines, Packing Machines, Industrial Washing Machines, Level & Pressure Monitoring for different kind of materials including diesel/petrol, flow monitoring solutions, Automation of Industrial Boilers and many other solutions covering all the needs of our valued customers.





Energy Monitoring

We provide reliable solutions for power monitoring. Energy Monitoring is currently the requirement of almost every industry due to the global attraction towards the optimization in energy conservation.

These solutions are not just the solutions for local power monitoring. But a centralized/online monitoring system which not only allows you to monitor the runtime electrical parameters but also helps you to keep record of these values in an explainable report format. Report formats are customized and can be generated as per user's requirement and demand. The hardware for this system includes energy analyzers, gateway server module and programmable logic controller.

With the help of a SCADA Software all of the energy analyzers can be centrally monitored through your Personal Computer, Laptop or Mobile Phones



Our Services



Service Level Agreements

Beside the automation solutions we also offer Service Level Agreements & Contracts for both Low Voltage (LV) Switchgear and PLC based Systems to both Public and Private Sectors.

We have already provided countless technical supports for installation and commissioning of different electrical and automation devices such as Variable Frequency Drives (VFDs), Soft Starters, Air Circuit Breakers (ACBs), Molded Case Circuit Breakers (MCCBs) and other electrical switchgear items. We have a vast experience of providing technical support in Siemens, Schneider and Eaton (Moeller) based Automation Systems.





Distribution Boards

We deal in electrical distribution boards including lighting DBs, motor control units, industrial grade portable extension boards and power distribution boards etc. After understanding customer's requirements our team offers the best possible and economical solutions with complete layout prior to assembling.

The empty enclosures used for distribution boxes are being manufactured by HENSEL & WALTHER according to the IEC Standards. These enclosures are type tested and made of industrial grade thermoplastic material to sustain the rough environmental conditions of industries suitable for both indoor and outdoor applications.



Our Trade Partners

S.A. Hamid & Co. works with all sectors to promote and develop effective collaboration, providing organisational development services, as well as training and capacity building programmes which promote new standards of professional practice. Further we work at the systems level building the enabling environment and creating platforms to promote and support partnerships to deliver transformational change.

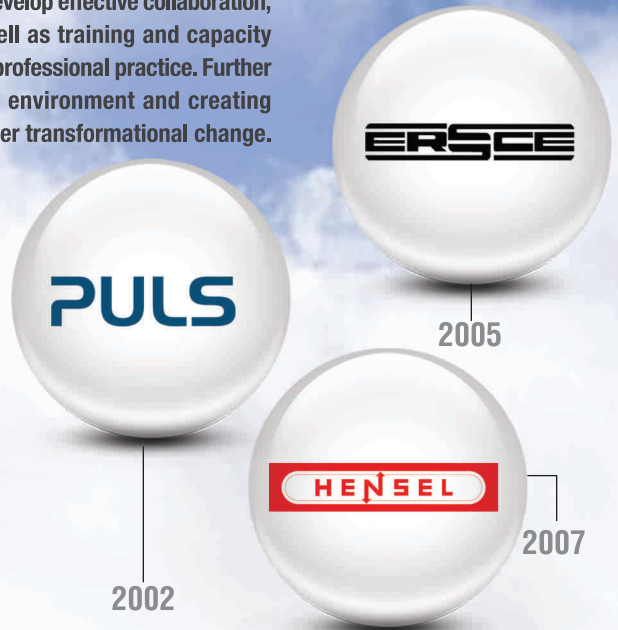
We are committed to capturing our experiences of partnership and developing cutting-edge theory from all our trade partners. We continually create and renew our practical tools, processes and approaches which help collaborations reach their full potential towards more and more brands.

S.A. Hamid & Co. is founded on a passionate belief in partnering as a key mechanism for creating a sustainable world, because today's economic, environmental and societal challenges are so complex and interconnected that they can only be tackled by different sectors working together.

Today there are many examples of multi-stakeholder collaborations where government, business, civil society, and development agencies are joining their resources and competencies to stimulate innovation, maximise impact, and ensure sustainability. We will need to see the quality of partnering increased to ensure partnerships are set up to be robust, efficient and effective, as well as to reduce the often significant transaction costs involved in partnerships.

S.A. Hamid & Co. working definition is:

A cross-sector or multi-stakeholder partnership is an ongoing working relationship between organisations combining their resources and competencies and sharing risks towards achieving agreed objectives while each achieving their own individual objectives.





2009



2012



2018



2010



2015



2009



2010



2012



2019



2015

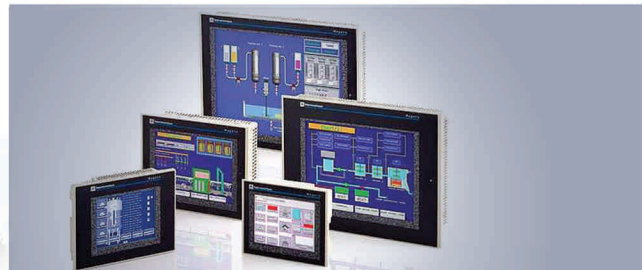




Schneider Electric



- **Air Circuit Breakers (ACB's)**
Circuit Breakers upto 6300A
- **Moulded Case Circuit Breakers (MCCB's)**
Circuit Breakers upto 1600A
- **Miniature Circuit Breakers (MCB's & ELCB's)**
Circuit Breakers upto 125A
- **Magnetic Contactors**
Magnetic Contactors upto to 450kW
- **Motor Protection Circuit Breakers (MPCB's)**
Motor Protection Circuit Breakers UP to 30kW
- **Overload Relays**
Thermal Overload Relays 0.06kW to 75kW
Electronic Overload Relays 18.5kW to 315kW
- **Variable Frequency Drives & Soft Starters**
Soft Starters 0.37 to 1200KW
Drives from 0.18 to 2400KW
- **Programable Logic Controller**
Programmable Relays - ZELIO LOGIC
Programmable Controllers - TWIDO
Automation Platforms - Modicon 340 Premium & Quantum
- **Human Machine Interface**
HMI Display 3.8" to 19"





CITEL

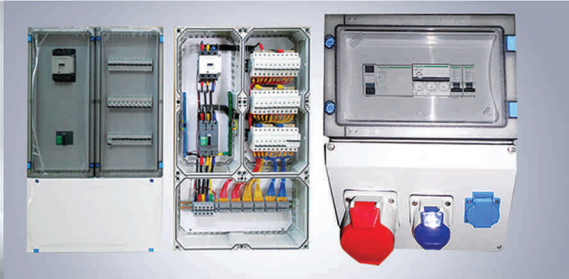


80
YEARS
SINCE 1937



- AC Power Surge Arresters (SPDs)
- Photovoltaic Surge Arresters DC (SPDs)
- Telephone Line Surge Arresters
- Data Line Surge Arresters
- High Frequency Coaxial Wire Surge Arresters
- Gas Discharge Tubes
- Type 1, Type 2 & Type 3 With Remote Signaling





- Junction Boxes For Indoor & Outdoor Applications With Complete Protection From Sunlight (U.V)
- Junction Boxes For Under Water Application (Waterproof Boxes)
- Ready-Made Distribution Boxes For Upto 54 MCB Modules
- Modular Enclosure System For Customized Application With IP 66 Rating
- Customized Combiner Units For Solar Application
- Protection Class II, Totally Insulated Systems
- Flame-Retardant & Self-Extinguishing Material
- Degree of Protection IP65, IP66 / IP67





F W W **WALTHER-WERKE**
FORTSCHRITT SEIT 1897



- Industrial Plugs And Sockets From 16 Amp To 125 Amp
- Available In 110V, 230V, 400V & 500V
- Industrial Portable Extension Units
- Customized Socket Combination Units
- Interlocked Industrial Sockets For Extra Human Safety
- Heavy Duty Connectors For Industrial Machinery
- Weather Proof IP44 & IP67
- Self Extinguishing and Flame Retardant





POLAND

emitter®



- Enclosures For Feeder Pillars
- GRP Based Enclosure With Self-Extinguishing & Flame Retardant Behavior
- Ultra Violet Light Resistant (Sunlight Proof)
- Outdoor Free Standing Cabinets
- Indoor Flush Type Cabinets
- Combinable Units For Large Setups
- IP44, IP54, IP65 & IP66
- Multiple Color Options
- Electric Shock Resistant





SWITZERLAND

AGRO

... your quality-connection



- **Stainless Steel Cable Glands**
- **Synthetic Cable Glands With Lamellar Technology**
- **Nickel Plated Brass Cable Glands**
- **Explosion Proof Cable Glands**
- **Special Cable Glands & Cable Entries**
- **Dead Plugs & Reducers**
- **Degree Of Protection IP 68**
- **Flexible Conduit System**
- **Flame retardant & self extinguishing behaviour**





EATON

Powering Business Worldwide



- Field Isolators with IP67 Enclosure
- IP66 Selector Switches
- IP67 Push Buttons & Panel Lights
- Programmable Logic Controller(PLC) with Display
- Safety Switches & Safety Relays
- DC-String Breaker for PV Installation
- DC-Switch Disconnectors Breaker for PV Installation
- Breakers & Contactors
- Limit Switches



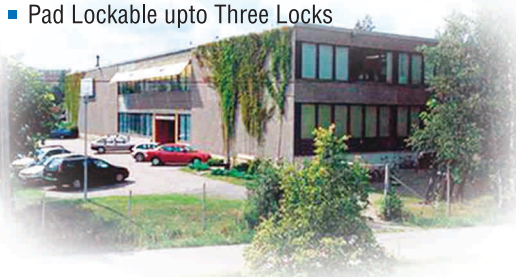
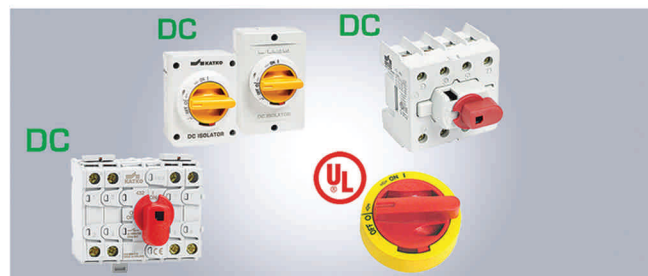


FINLAND

KATKO



- Isolator & Safety Switches
- Change Over Switches
- EMC Switches
- Photovoltaic / DC Load Break Switches
- Side Operated Polycarbonate & Aluminum Switches
- Bypass Switches For Frequency Invertor
- Fire Rated Aluminum & ATEX Switches
- Polycarbonate, ABS, Sheet Steel, Aluminum & Stainless Steel Enclosures
- Wide Range From 16 -1600A
- Excellent For Extreme Weather Conditions
- Resistant Against Chemicals
- IP 65 / IP66
- Pad Lockable upto Three Locks





PEPPERL+FUCHS

SENSING YOUR NEEDS



- Proximity Sensors
- Speed Monitoring & Zero Speed Sensors
- Light Grid And Safety Sensors
- Photo Electric Sensors
- Print Mark Sensors And Color Sensors
- Level Monitoring Sensors
- Ultrasonic Sensors
- Rotary Encoders
- RFID Sensors And Systems
- Barcode Sensors & Systems
- Linear & Rotary Valve Positioners

Largest Manufacturer of Factory Automation in the World.



ULTRASONIC SENSORS



PROXIMITY SENSORS



PHOTOELECTRIC SENSORS



LIGHT GRIDS & SAFETY SENSORS



RFID & BARCODE SYSTEMS





PULS



- No. 1 Manufacturer of DIN-RAIL Power Supplies For All Industrial Needs
- DC-UPS & DC-DC Convertors
- Redundant, Parallel & Series Systems
- Upto 95.6% Efficiency (Award Record)
- Maximum Power to Size Ratio
- Longest service life at full load conditions
- The only Power Supply Manufacturer with 100+ R & D Engineers focused purely on Power Supply Design
- ATEX, ASI & Device-Net Units also Available





SIEMENS

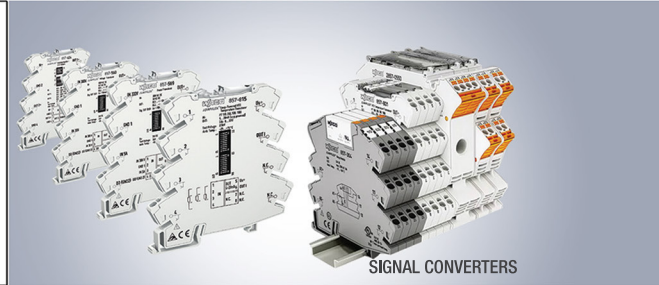


- **Simatic S7-400 Based Solutions & Spares**
 Central (CPU)
 Fault-Tolerant (CPU)
 Communication Modules
 Digital / Analog Input / Output Module & Power Supplies
- **Logo! Based Solutions & Spares**
 Logo! Modular Basic Variants
 Logo! Communication Modules
 Logo! Power Supplies
 Siplus Logo! Power Supplies
 Logo! Software
- **HMI's**
 Simatic HMI Operator Panels
 Simatic HMI Touch Panels
 Simatic HMI Mobile Panels
 Simatic PC Based Automation
- **Simatic S7-1200 & S7-200 Based Solutions & Spares**
 Central Processing Units Digital Modules
 Analog Modules Special Modules
 Communication Modules Operator Controller and Monitor
- **S7-300 Based Solutions & Spares**
 Central Processing Units (Standard CPU)
 Central Processing Units (Compact CPU)
 Central Processing Units (Fail-safe CPU)
 Siplus F Digital / Analog Modules
 Communication Modules
- **Low Voltage**
 ACB's (Air Circuit Breaker)
 MCCB's (Moulded Case Circuit Breaker)
 MCB's (Miniature Circuit Breaker)
 RCCB's (Residual Current Circuit Breaker)
 MPCB
 Magnetic Contactors

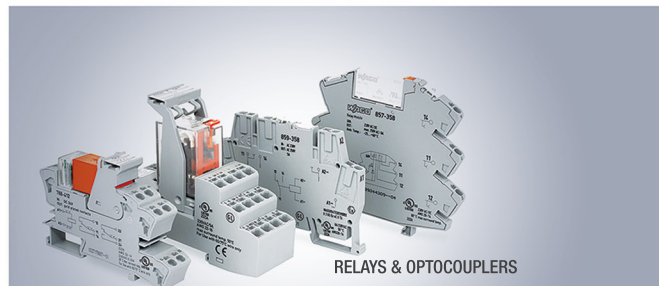
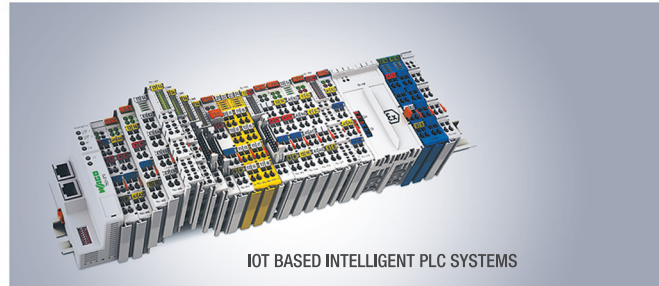




WAGO[®]
INNOVATIVE CONNECTIONS



- Screw-less Terminal Block Systems for Maintenance Free Connections
- World's Record Best Splicing Connectors for Safe & Reliable Wire Connections
- Signal Conditioners & Isolation Amplifiers
- Current and Voltage Signal Conditioners
- Frequency and Temp. Signal Conditioners
- Comprehensive Range Of PLC System and Remote I/Os
- PLCs For Extended Temp. -40 to 70°C
- Relays And Optocoupler Modules
- C.T Terminal Blocks
- Electronic Circuit Breakers (ECBs)
- Power Supplies And DC UPS
- Battery Chargers





Auer Signal



- Signal Tower Lights
- Rotating Beacons
- Strobe Lights
- Electronic Sounders & Alarms
- Motorized Hooters
- Explosion Proof Signal Lights
- Explosion Proof Sounders & Alarms
- Explosion Proof Telephones





- Protective plastic conduits
- Protective metal conduits liquid tight
- Special protective conduits
- Tubing clamp systems
- ROHRflex corrugated plastic tubing
- Connectors FLEXAquick
- Suction blower, transport hoses
- Food-safe & liquid-tight
- Good chemical resistance
- Free of halogen, silicon & cadmium
- Self-extinguishing & flame retardant
- Resistant to solvents and UV light, or coated with silicone
- Stainless steel conduits for temperature -300°C to + 600°C
- Approved for Up to IP 69K





125
YEARS
1893-2018



GERMANY



- High Performance Pressure Switches for 1 & 3 Phase Systems
- Control Pressure Switches for Automation Purposes
- Water Pump Pressure Switches
- Control (Pilot Duty) Pressure Switches
- Submersible Float Switches For Filling And Emptying Of Tanks
- Submersible Stainless Steel Level Sensors
- Air Compressor Switches
- Manual Motor Starters





ERSCE



- Limit Switches
- Safety Switches
- Rope Pull Switches
- Relay Sockets
- Micro Switches
- Available In Metal & Plastic Bodies
- IP 66





Show Room

7 - Brandreth Road, Lahore - Pakistan

Ph: +92 42 3765 0099, 3766 4210

Fax: +92 42 3765 1391

Corporate Office

22C- G.E.C.H.S Phase III Peco Road,

Lahore Pakistan

Ph: +92 42 35949261 -66